



O'DONOGHUE RING COLLECTION

A COLLECTION OF EXPERIENCES

KILLARNEY
PLAZA HOTEL

KILLARNEY
TOWERS HOTEL

KILLARNEY
AVENUE HOTEL

RIVER ISLAND
HOTEL

PARK PLACE
APARTMENTS

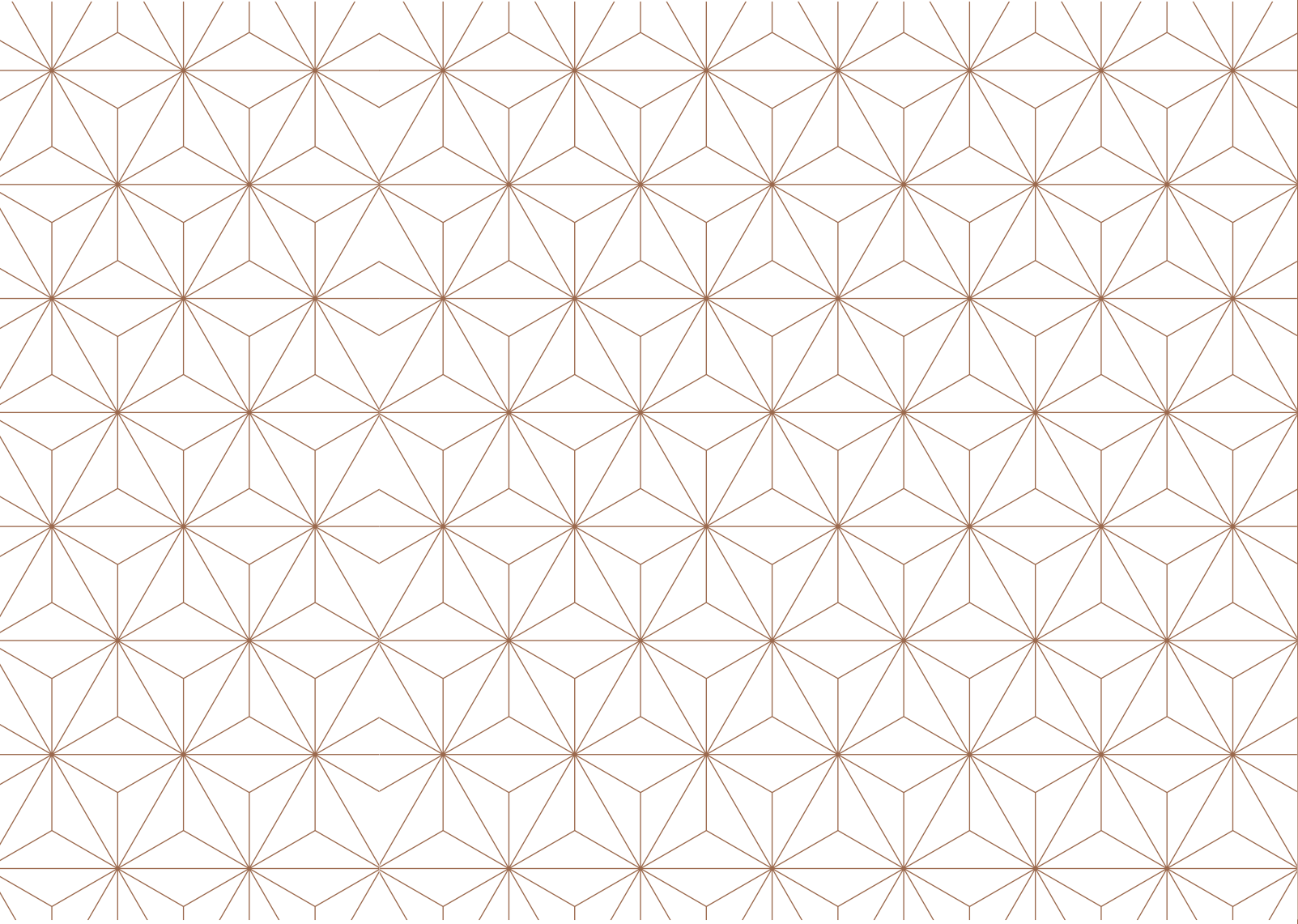


Café du Parc



SCRUFFY'S
BAR KILLARNEY





Welcome to O'Donoghue Ring Collection

As a local family-run business, hospitality is in our DNA. Our service is warm and intuitive, while authentic to our roots and the renowned Kerry welcome. We take great pride in our surroundings and strive to unlock the destination for our guests, by providing an insight into hidden gems off the beaten track, as well as connecting them with the most sought-after attractions and adventures nearby.

Our portfolio features four distinct hotel brands including the Killarney Plaza Hotel & Spa, the Killarney Avenue Hotel, the Killarney Towers Hotel and the River Island Hotel along with Park Place Apartments. Each property imbues its own bespoke experience, uniquely tailored to the guest's taste and preference in mind, delivered by a passionate and experienced team. Innovative restaurants & bars include The Tan Yard, Café Du Parc and O'Donoghue Public House while The Spa at the Killarney Plaza offers the ultimate experience in relaxation.

We very much look forward to your visit.

O'DONOGHUE RING COLLECTION



KILLARNEY
PLAZA
HOTEL

Located on the doorstep of Ireland's oldest national park, the Killarney Plaza Hotel & Spa blends classic 4-star luxury with a vibrant town centre and an abundance of outdoor adventure and natural wildlife, waiting to be explored.

Telephone - +353 (064) 662 1100

Reservations - +353 (0)64 662 1111

info@killarneyplaza.com | killarneyplaza.com



O'DONOGHUE RING COLLECTION



Perched on the gateway to the Ring of Kerry and Wild Atlantic Way, it is the ideal base from which to explore the famous loop road that takes you through 10,000 years of dramatic history, deep forests and rugged landscapes or venture along the Kerry coastline, where white sands and glittering waves await.

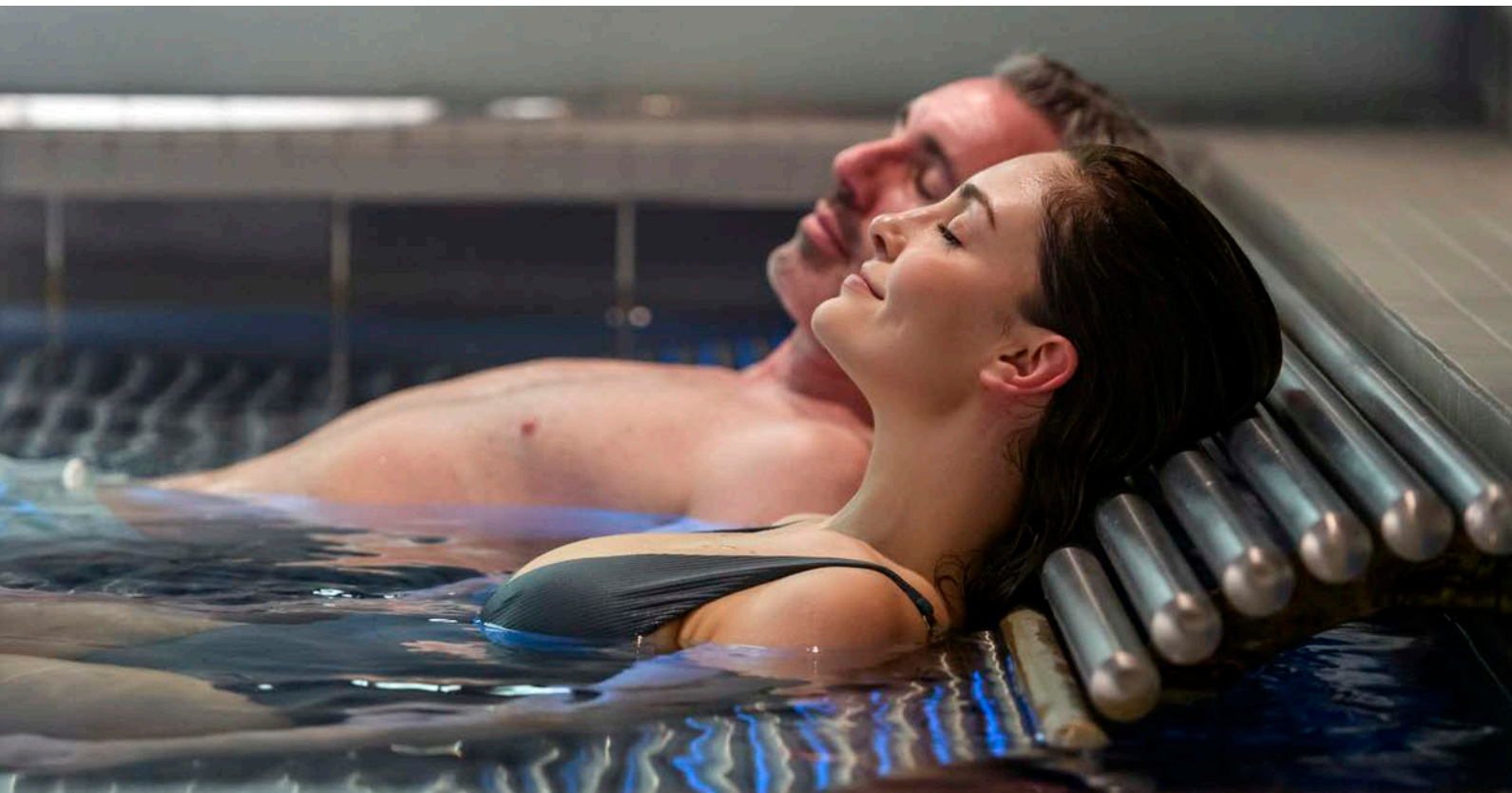
Embrace the opportunity to climb the highest mountain in Ireland or swim in the lake at Dundag. A luxurious stay at the Killarney Plaza Hotel & Spa combines the best of all worlds with great food and drink experiences, a tranquil spa, the bustling main street and nature's playground at your front door, allowing you to seamlessly transition between the buzz of the town and calm of the hotel - all at your own leisure.

Guestrooms

Stylish and spacious classic and executive guestrooms, offer luxurious traditional comfort. All rooms are fully air conditioned with a number of suites available also. Our signature bar and restaurants include Café du Parc and The Tan Yard, renowned for great food, local produce and expertly crafted cocktails.



O'DONOGHUE RING COLLECTION



O'DONOGHUE RING COLLECTION

Signature Restaurant

THE TAN YARD

The Tan Yard Restaurant offers a warm and relaxed vibe, where quality prime cuts and fresh local seafood are infused with flavour and grilled to perfection. Overlooking Ireland's oldest national park, The Tan Yard celebrates a deep sense of place with a thoughtful menu that reflects the heritage and nature of the surrounding Kerry landscape. Inspired by the old tanyards of Killarney, the design and décor is heavily influenced by Killarney National Park and the surrounding woodlands. Evolving as the seasons grow, the menu is current - inspired by our love of the land



O'DONOGHUE RING COLLECTION

and our ethos of using high quality produce and local ingredients from sustainable sources. Our drinks are prepared and primed with the same values. With a warm and relaxed vibe, the design lends itself to perfectly host an intimate gathering, with cosy corners and private dining areas, also available for exclusive hire.



Whether celebrating a special occasion or milestone anniversary, our experienced team will be happy to curate a dining experience for all to savour.

Vibrant Bar & Café

Inspired by the vibrant café culture of Europe and the natural beauty of the neighbouring Killarney National Park, Café du Parc is a casual and relaxed eatery, where great coffee and food are served all day.

A people watching haven, kick start your day with a homemade pastry and the best coffee in town by Irish boutique coffee roasters - Eleven14.





Located at the intersection of the bustling Main Street and Ireland's oldest national park, watch the world go by and soak in the atmospheric blend of chirping birds from the park trees juxtapositioned with the passing javeys of a bustling Killarney town centre, just steps away. We meet you in your essence with freshly squeezed juices, nourishing salads and tasty vegan options by day and delicious cocktails and worldly inspired bar bites by night - all served up to the sounds of soulful tunes, funky beats and old skool jams. Local is at the heart of what we do, and you'll find a medley of Irish artisans celebrated throughout our menu. A highlight of Café du Parc is the renowned Funky Brunch. Served every Saturday and Sunday, it's a great excuse to relax and catch up with friends over a mimosa, eggs benedict and so much more.



Discover a Tranquil Oasis

The Spa at the Killarney Plaza Hotel is a peaceful oasis in the heart of Killarney town, guaranteed to leave you feeling refreshed and invigorated during your stay. Designed to provide an atmosphere of idyllic serenity, our spa features six treatment rooms, while our lavish Relaxation Garden is the ideal place to clear your mind and escape the outside world.



O'DONOGHUE RING COLLECTION

Unique to our spa experience is our Gulfstream Hydrotherapy Pool, an indulgent water therapy designed to release stress and tension. The Spa also features a Mud Serail Chamber. Through a sequence of dry heat and steam infusion with essential oils, you will feel rested and revitalized with this detoxifying and skin brightening therapy. The experience is enhanced further with a body-boosting mud and light therapy to help open pores and energize the body.



Gift Shop at The Spa

Stock up on all your favourite skincare products during your stay with a visit to the Spa Gift Shop where the experienced team will help you select a range, best suited to your skin type, for the most effective and visible results. Continue your spa journey at home with a treat for yourself from our retail range or give the gift of relaxation with a spa voucher for a loved one back home.

Leisure at the Plaza

While staying with us, you have the opportunity to avail of an extensive array of hotel leisure facilities, including access to our Sauna, Steam Room, Whirlpool, 15m Swimming Pool and our fully equipped Gymnasium, with a team of friendly and experienced staff on-hand to assist, as you work out.



O'DONOGHUE RING COLLECTION

KILLARNEY
AVENUE
HOTEL

Welcome to the Killarney Avenue
Hotel, a warm and comfortable haven
with an address at the gateway of the
renowned Killarney National Park.

Telephone - +353 (064) 663 2522

Reservations - +353 (0)64 662 1111

info@killarneyavenue.ie | killarneyavenue.com



KILLARNEY AVENUE HOTEL



The Killarney Avenue is a 4-star hotel located in the centre of town, where you'll find a welcoming home away from home and a place where everybody knows your name.

Guestrooms

Home to the original Irish welcome, our town centre location is perfect for those seeking central accommodation in the heart of the 'Town in the Park.'



The 4-star Killarney Avenue Hotel offers guests a choice of 66 deluxe guestrooms over 3 floors. Our hotel accommodation in Killarney reflects the warm atmosphere of the hotel, offering a relaxing and comfortable haven for guests. The large windows allow an abundance of natural light and offer unrivalled views of Kenmare Place while others overlook the Golden Gate entrance to Killarney National Park.

O'DONOGHUE RING COLLECTION

Warm and inviting, the Lobby and Resident's Lounge provide a comfortable space for relaxing with a book, a pre-dinner cocktail or a nightcap as you plan your Kerry adventure for the next day.

Home away from Home



O'DONOGHUE RING COLLECTION

A Relaxed Dining Experience



Druids Restaurant is widely regarded as one of the best restaurants in Killarney, where locally sourced food is served amongst the warm and inviting surrounds of an old world atmosphere. The menu celebrates both international and local cuisine, catering to all tastes and makes it an ideal location for celebrating a special occasion. All products used in our menus are sourced from Quality Assured Suppliers in accordance with the Féile Bia.



O'DONOGHUE RING COLLECTION

A Local Favourite

Cosy corners and comforting surroundings make The Kenmare Rooms an ideal venue for relaxing over great food, a creamy pint and enjoying live music at the weekend in Killarney. A local favourite for a great meal, served in warm and welcoming surrounds, food is served daily from 12.30pm - 9.30pm.



The outdoor Terrace is ideal for hosting a celebratory BBQ and outdoor sports screenings.

Featuring a selection of light bites, sandwiches and mains, The Kenmare Rooms is also a perfect pitstop for lunch during a day of exploring or dinner in the heart of Killarney town.

O'DONOGHUE RING COLLECTION

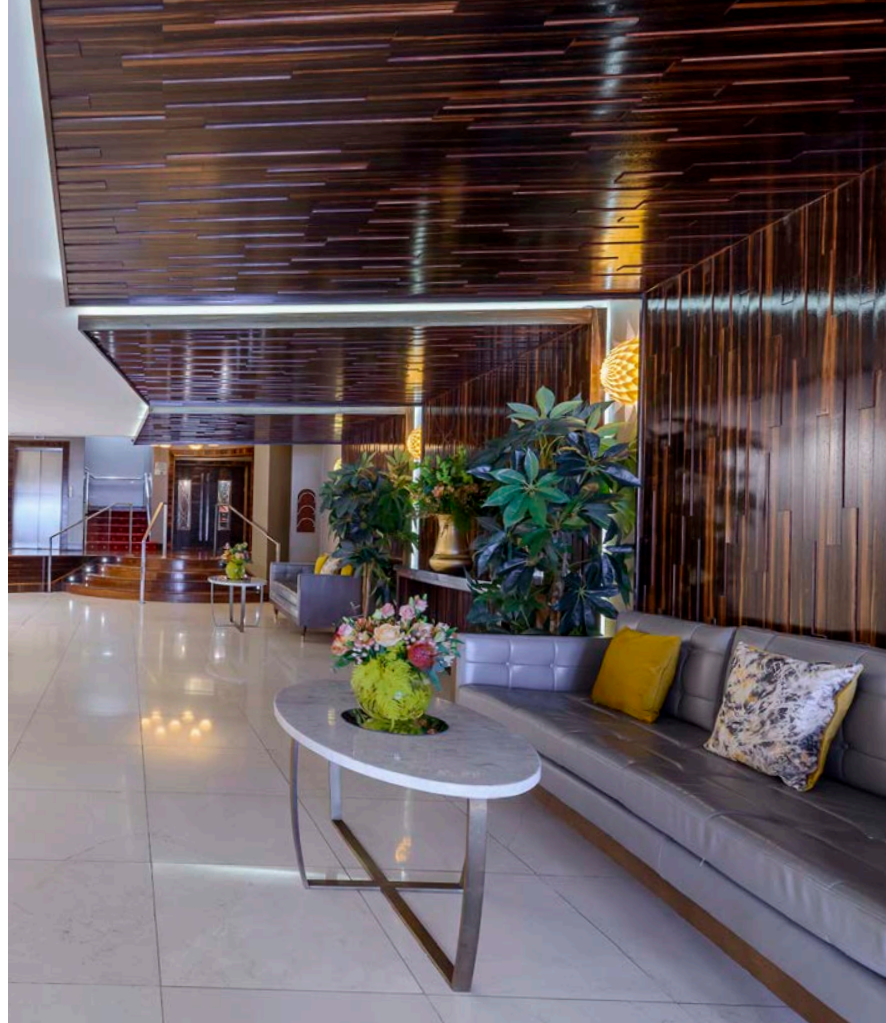
KILLARNEY
TOWERS
HOTEL

The 4-star Killarney Towers Hotel & Leisure Centre is the perfect location from which to experience local Killarney life in the heart of a bustling and vibrant town.

Telephone - +353 (064) 663 1038

Reservations - +353 (0)64 662 1111

info@killarneytowers.ie | killarneytowers.com





Guestrooms

Our double and twin rooms vary in size and comfort, depending on your needs. Each room offers guests all the modern conveniences that you would expect from a contemporary 4-star hotel. Spacious and bright, guestrooms are decorated and furnished with your comfort and convenience in mind.

Leisure Centre

Whether you would like to maintain your workout routine, try something new or simply take a relaxing dip in the pool, discover the Leisure Centre at the Killarney Towers Hotel. Residents can enjoy complimentary use of the leisure facilities during their stay as well as additional training services to help stay fit and active on your travels.

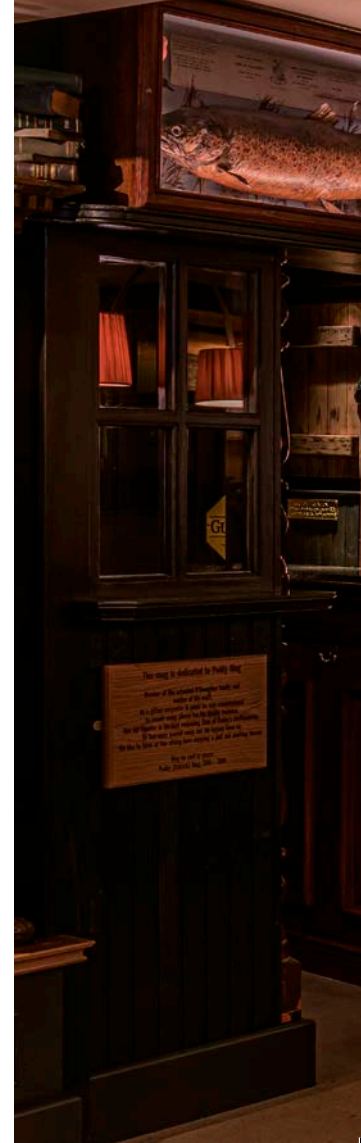
- Whirlpool
- 15m Swimming Pool
- Fully Equipped Gymnasium
- Personal Training
- Gym Programmes
- Private Swimming Lessons
- Group Classes
- Sauna and Steam Room

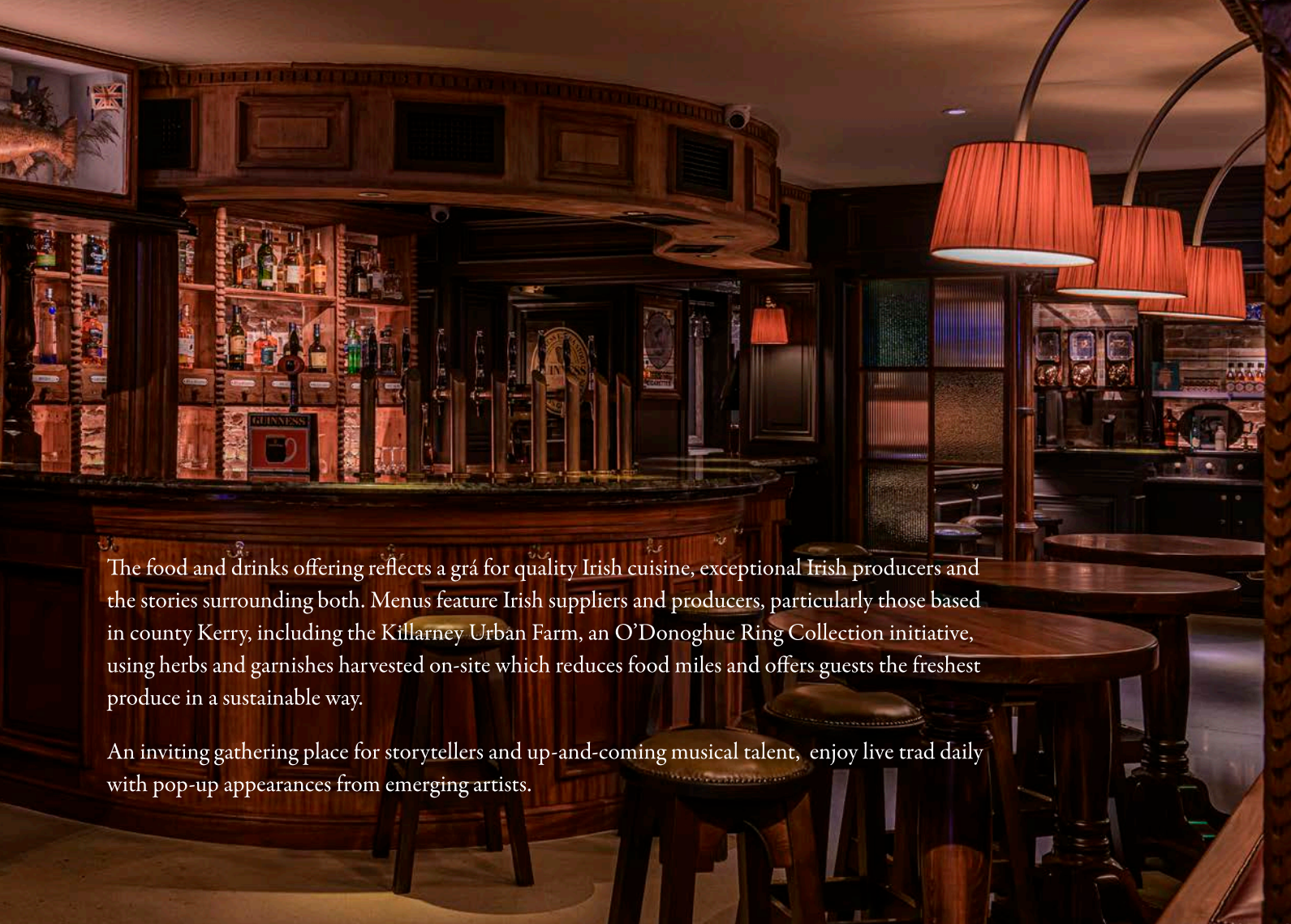
O'DONOGHUE RING COLLECTION

O'Donoghue Public House

O'Donoghue Public House is the proud legacy of two generations. The newly restored and timeless bar gives guests an authentic experience immersed in family traditions.

Craft is at the core from reclaimed wood floors, a hand-carved timber bar, traditional family recipes and high-quality local suppliers, craftsmanship can be seen, felt and experienced throughout the premises. A seamless marriage of old pub ways with some new finishes - 'Old ways, new doors,' as they put it themselves - every element selected for this stylish and reassuringly classic bar has a story to be told, and someone interesting to tell it.





The food and drinks offering reflects a grá for quality Irish cuisine, exceptional Irish producers and the stories surrounding both. Menus feature Irish suppliers and producers, particularly those based in county Kerry, including the Killarney Urban Farm, an O'Donoghue Ring Collection initiative, using herbs and garnishes harvested on-site which reduces food miles and offers guests the freshest produce in a sustainable way.

An inviting gathering place for storytellers and up-and-coming musical talent, enjoy live trad daily with pop-up appearances from emerging artists.

O'DONOGHUE RING COLLECTION

Scruffy's Bar

An easy-going hotspot for the light-hearted in life, Scruffy's in Killarney is a magnet for the young, hip and happening.

A buzzy bar in the heart of the town, the atmosphere is fun and energetic with a menu that offers a street-style fusion of spicy wings, stacked burgers, loaded fries and sweet treats. Drinks are cooler than cool with promos on ice-cold beer buckets and two-for-one frozen cocktails. Full of casual corners for a pint and the game or a catch-up on the goss over a 'Cosmopolitan' with the girls, Scruffy's is the perfect place for some daytime tipples. Evenings come alive with a party crowd, and an unrivalled line-up of live music and guaranteed craic late into the night.



O'DONOGHUE RING COLLECTION

Innisfallen Restaurant



The Innisfallen Restaurant located on the ground floor level is a defined presence among Killarney's renowned dining scene. A modern setting with friendly staff and delicious food where you will find a memorable dining experience and attentive service.

Drawing inspiration from Innisfallen Island, guests can book a boat trip through the hotel Concierge from Reen Pier across the tranquil waters of Lough Leane for a guided tour of the island. Explore the ruins of a 12th century Augustinian Priory and Romanesque Church while also learning about the natural surroundings and wildlife of this sacred place.

O'DONOGHUE RING COLLECTION

RIVER ISLAND HOTEL

The River Island Hotel is located at the heart of Sliabh Luachra in the vibrant market town of Castleisland. Journalist Con Houlihan once described his native Castleisland as “less a town, than a street between fields”. Known far and wide as the ‘gateway to the Kingdom’, Castleisland is 10 miles from Tralee and 15 miles from Killarney.

Our town centre location is perfect for those seeking a quaint and homely base for touring County Kerry. Reflecting the warmth and hospitality of the hotel and town of Castleisland, each guestroom overlooks the main street or surrounding area.

Telephone - +353 (064) 66 714 2555

Reservations - +353 (0)64 662 1111

info@riverislandhotel.com | riverislandhotel.com



Guests can enjoy great food and good wine during their stay at the River Island Hotel, the perfect place to experience and soak in the best of local Castleisland life.



The 3-star River Island Hotel offers guests a choice of 52 deluxe guest rooms over 2 floors. Our accommodation reflects the warm atmosphere of the hotel, offering a relaxing and comfortable haven for discerning travellers.

O'DONOGHUE RING COLLECTION

Park Place Apartments

Park Place apartments is amongst Killarney's top rated self-catering holiday facility.

Set at the top of high street, Park Place Apartments offer all the town centre amenities just a few steps away, with a wide selection of restaurants, bars and local boutiques all on our doorstep.

Located at the gateway to the Wild Atlantic Way, the apartments are just a five minute walk from Killarney National Park, and a 20 minute drive to Carrauntoohill, Ireland's highest mountain.



Killarney Urban Farm

Ireland's first hospitality hydroponic urban farm, growing for and servicing bars, restaurants, and hotels in the Kerry region. The ultimate objective of the farm is to innovatively curtail food miles, reduce our partner's carbon footprint and produce the freshest produce around.



With cutting-edge research, development and patented technologies, the farm is a lush and leafy installation complete with 13 exclusive Green Towers, designed to produce high-quality food on a hyper-local level for a truly authentic 'Farm to Fork' experience. Not only do these elegant 'Green Tower' growing systems use 90% less water than traditional farming and produce 30% more plant yield, they also reduce transportation distances, packaging and waste.



Killarney House and Gardens are a treasure of Killarney National Park and the ideal starting point to explore the wonders of Killarney National Park and beyond.

As you pass through, the sounds of the town fade into the distance providing an oasis of calm away from the hustle and bustle. Following the completion of an extensive restoration and reconstruction in 2016, the house and carefully manicured gardens have been restored to their rightful grandeur. With free guided tours of the former residence of the Browne and the McShain families, you won't be left disappointed.

Adventure Trails

With incredibly beautiful surroundings on the doorstep, you are guaranteed plenty of options for hiking, walking and cycling to keep you fit and active during your stay.

Hiking

Cardiac Hill & Torc Mountain - with its winding path, Cardiac Hill is definitely worth a ramble. Not for the faint hearted, the trail is highly recommended if you are looking for a challenge, and your hard work will be rewarded with the amazing views of the lakes when you reach the top. If you want to do a longer hike, try Torc Mountain. Your journey to reach the top of Torc will allow you to take in spectacular views of the famous Torc Waterfall and lakes along the way. Don't forget to look around at every opportunity as you will be greeted with views of Killarney's lakes, valleys, the Famine Fields where legend has it the famine potato crops are still intact and glorious panoramic views of the National Park.



And there's more...

Climbing, Boat Rides, Kayaking, Canoeing,
Hiking, Cardiac Steps, Torc Mountain, Cycling,
Golf, Horse Riding, Fishing, Kennedy's Pet Farm,
Muckross Pet Farm, Muckross House Family Ticket,
Ross Castle, Falconry, Bird Watching, Molls Gap,
Gap of Dunloe, Buddies Play Centre, Killarney House & Gardens,
Jaunting Cart, Paddle Boarding, Sea Swimming.



O'DONOGHUE RING COLLECTION

Gift someone special with a voucher for the O'Donoghue Ring Collection. Redeemable at all hotels, apartments, restaurants, bars and the spa.





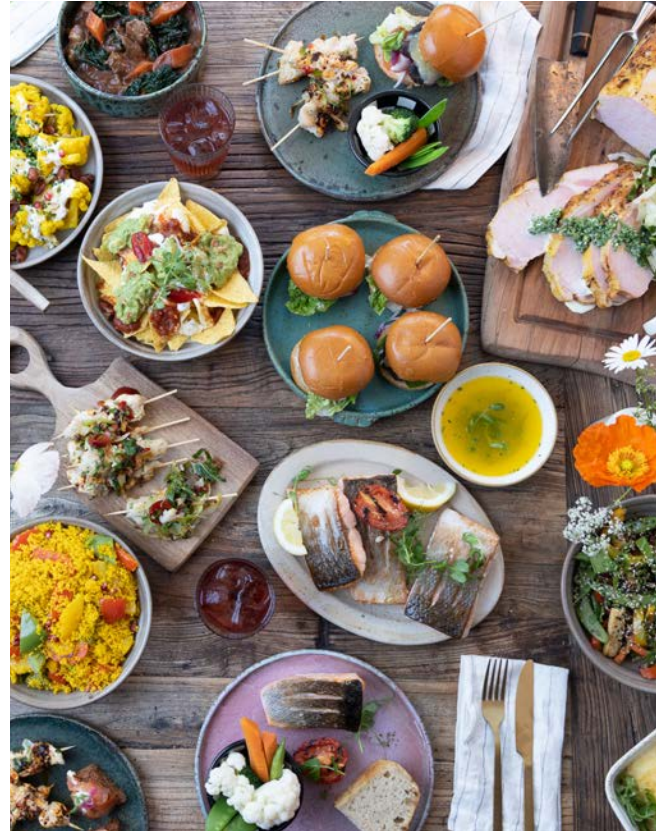


PLAZA AT HOME

Savour a taste of the 'Plaza at Home' with a full-service catering offering now available for bookings of 8 people and more.

Ideal for entertaining, menus are seasonal using quality local produce where possible. Options include everything from starters to mains and desserts, as well as finger food, cakes, sides and salads.

No matter what the occasion, our chef can tailor a menu especially for you, saving you time in the kitchen that can be spent enjoying your guest's company instead.



Central Reservations +353 64 662 1111
info@odrcollection.com | odrcollection.com



O'DONOGHUE RING
COLLECTION

KILLARNEY
PLAZA HOTEL

KILLARNEY
TOWERS HOTEL

KILLARNEY
AVENUE HOTEL

RIVER ISLAND
HOTEL

PARK PLACE
APARTMENTS




THE TAN YARD

Café du Parc

O'DONOGHUE

m.76 • PUBLIC HOUSE • m.76

SCRUFFY'S
BAR KILLARNEY

